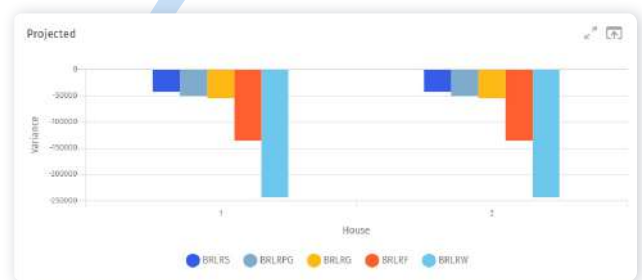


Harnessing The Power of Innovation

to Improve Flock Performance,
Animal Welfare, and Profitability



+ New Internal Requisition ^



The future of poultry farming is undoubtedly data-driven, and the benefits are clear: **increased efficiency, reduced costs, and improved productivity.**

As more producers adopt **the power of innovation**, the industry will continue to evolve, setting new standards for what's possible in agriculture.

Take a look:



9,700,

000,0

00

The Current State of the Protein Production Industry Demands Innovative Technologies to Support Business Growth

By 2050, the world population will reach 9.7 Billion, according to UN projections.

These metrics set an enormous pressure on the agricultural industry as in order to meet the growing demand, global production is required to increase by 69% between 2010 and 2050.

We're halfway there.

Producers, now more than ever, must rely on innovative technologies for smarter production and data-driven farm management practices to keep up with the increasing demand, traceability compliance, consumer trends, and environmental regulations.

Engineering Innovation, Creating Opportunities

For more than 30 years, MTech Systems has been partnering with protein producers, of all sizes and from every corner of the world to create the industry's most advanced and comprehensive farm management and production solutions.

We support producers solve the industry's greatest challenges with cutting-edge technology like **high-precision IoT Hubs, Artificial Intelligence, and Machine Learning Algorithms.**

Our Cloud-Based, SOC II-Certified platforms offer end-to-end applications for every part of the supply chain that can be easily tailored to meet particular business goals.



"MTech Systems has done very well in moving their technology forward to help us keep pace with our changing business environment and expanding business needs."

STEVE COX
Director de TI
Wayne Farms LLC

The Best Day to Start Was Yesterday, The Second Best Day is Today

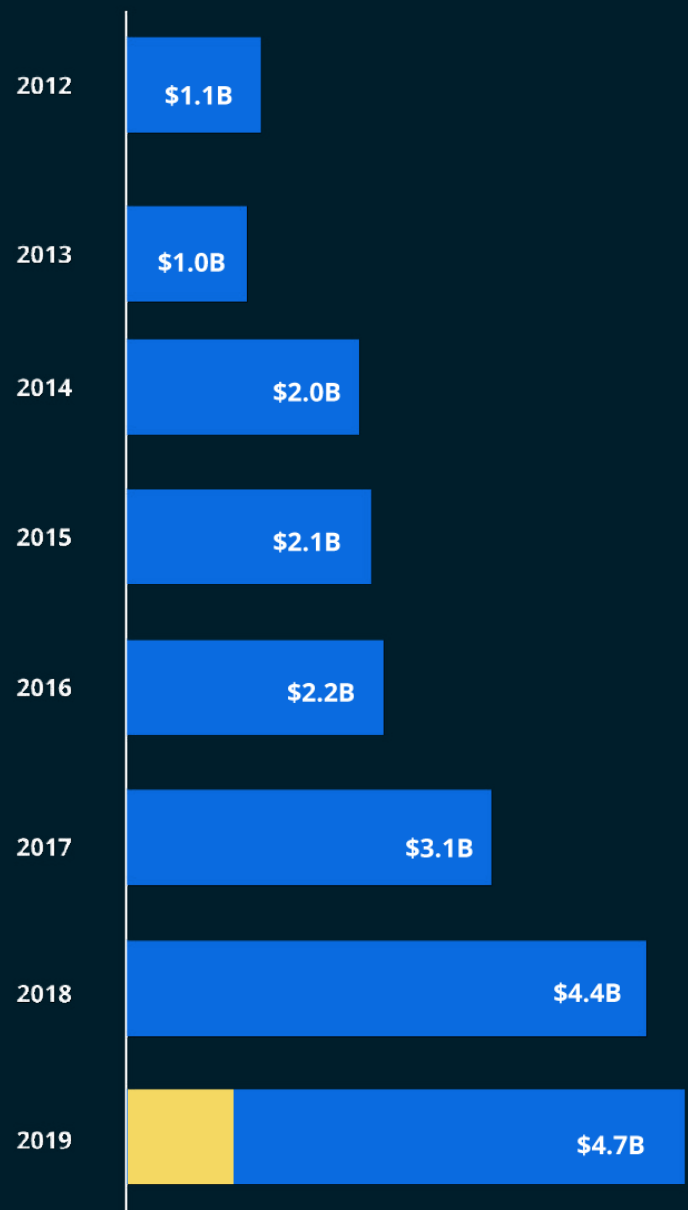
Demand for precision agriculture from vertically integrated businesses is on the rise, as reported by IBISWorld. In the U.S. alone, the adoption rate of precision technologies has been on an upward trajectory and has quadrupled since 2012

As the benefits of adopting these technologies become more evident, the risk of being outperformed by early adopters exponentiates.

AgFunder reported that last year alone **spending on farm management software, sensors, and IoT technologies reached over \$885Million USD.**

The agriculture industry is no longer alienated from technology development, but rather, one of its greatest beneficiaries.

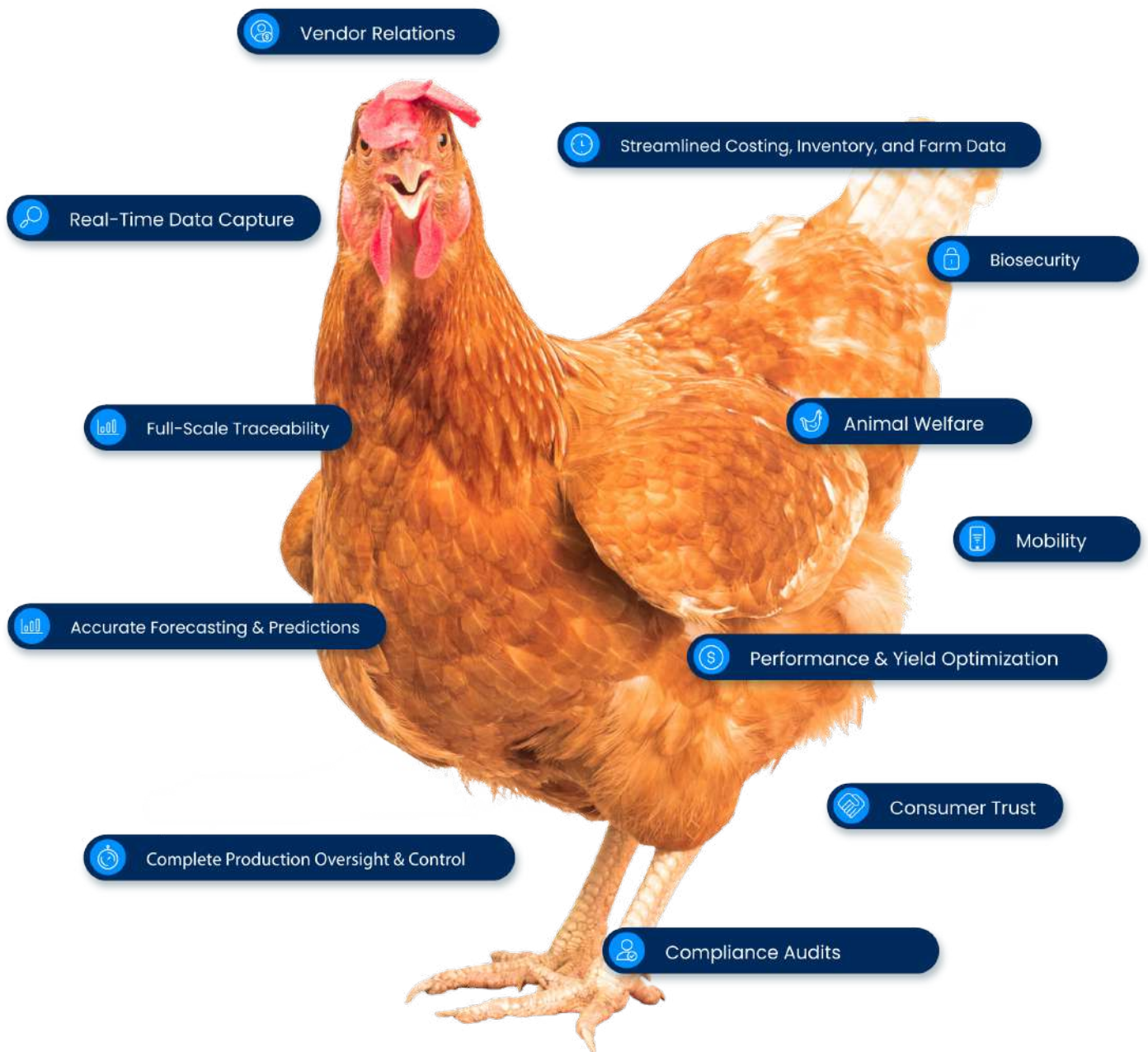
Farmtech
Annual Financings 2012-2019



Three Decades Turning Challenges into Opportunities

Our industry-specific solutions leverage the highest technologies to solve the industry's most challenging issues, leaving just one unanswered question:

How will your organization benefit from?



We understand no two businesses or budgets are the same, that's why in order to meet specific business needs and goals, our solutions are fully scalable.

Our Unwavering Mission

We strive to help feed the growing world population by increasing yield in protein production, sustainably, efficiently, and without compromising animal welfare.

Accomplishing our mission is no easy task, but by working closely with our partners and utilizing the latest technologies we are able to accomplish these goals concurrently.

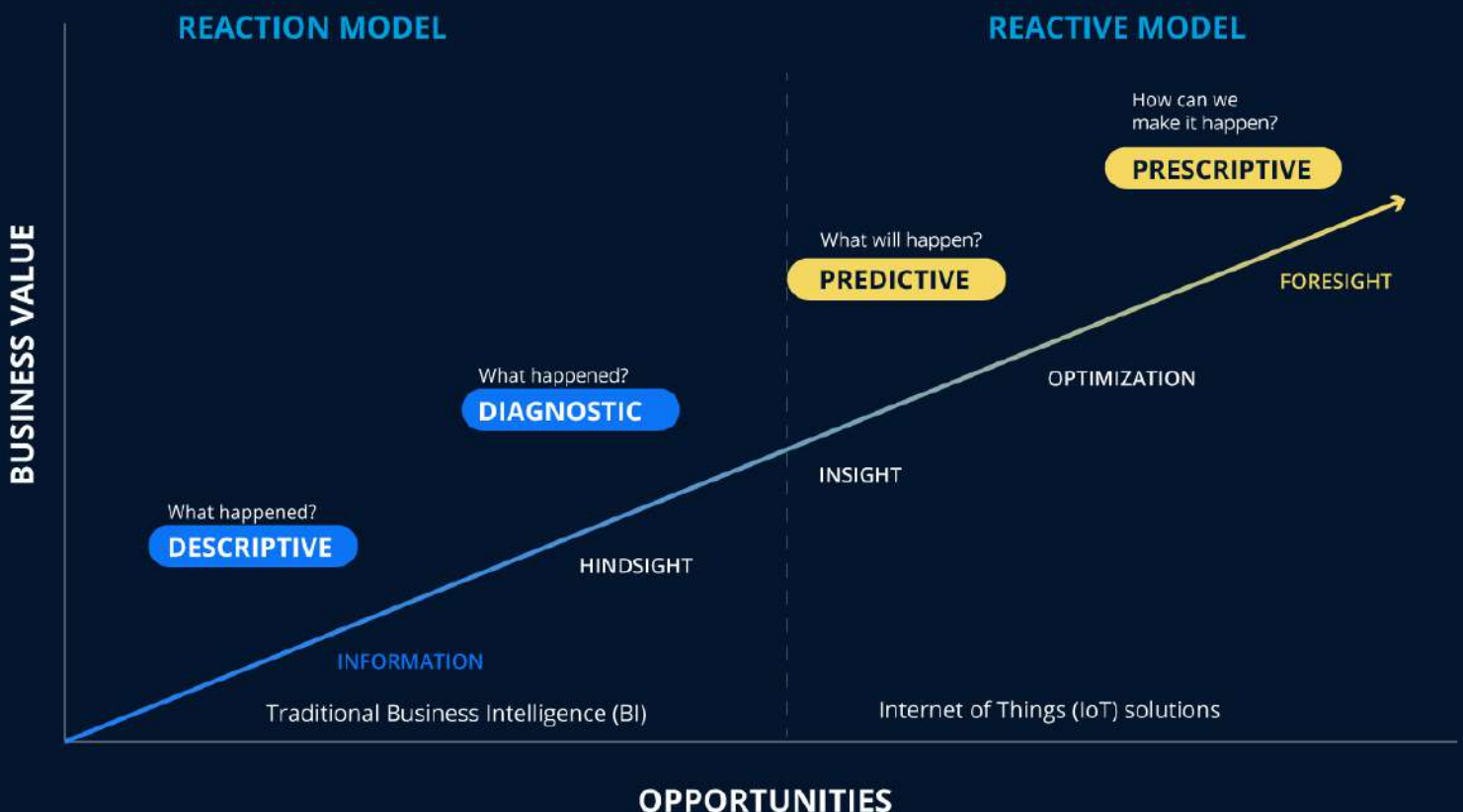
Dealing with costly spreadsheet errors, omissions, and data duplication is a thing of the past.

MTech Systems' comprehensive toolkit will make it a lot easier for your organization to...

Collect all supply chain data from farm to processing plant.

Connect and analyze data from multiple sources to identify cause and effect.

Correct flock performance and increase profitability with data-driven, proactive decisions that positively impact your business.



An Innovation Revolution Born in 1987

"The vision of MTech Systems began when I visited farms with my dad when I was a kid. After college, my dad told me the industry needed a solution to manage farms, and that's how MTech was born; in a small Atlanta kitchen in 1987 by a small team of three people before the internet even came about.

Since that day, we have not looked back.

Today, we're a global team of more than 240 passionate and focused professionals who partner with the best protein producers globally and leverage cutting-edge technologies to solve the industry's most pressing challenges."



Marcel Cohen
President, MTech Systems.

While we didn't realize it then, we now see MTech Systems started an innovation revolution that continues to shape the future of the farming industry.

And this revolution continues to gain momentum and is paving the way to a more prosperous future.

Our Innovative Solutions

From hatcheries to processing plants, our solutions offer unimaginable benefits to every producer, grower and integrator, throughout the supply chain.



Cloud-based, end-to-end farm management platform that centralizes all performance and costing data, while delivering accurate planning and projections.



Powered by Artificial Intelligence, our IoT hub solution collect real-time data from existing hardware and streamlines it into a centralized platform resulting in smarter flock management.



Business Intelligence and data analytics toolkit that provides users better visualization on all performance KPIs, drilling down into the cause and effect of all variables.



Optimization engine, powered by Artificial Intelligence and Machine Learning algorithms, that improves efficiency, increases yield, and reduces waste in meat production planning.

You Won't be Alone in your Innovation Journey

Starting the journey of digitalization and modernization of your operations may seem overwhelming at first, but with our team of experts, that won't be the case. We'll assist you at every step of the way to simplify the process and ensure optimal results.

Every company is unique and that's why our solutions are designed with flexibility at its core.

Through our vast industry experience, we've learned a lot about the paths producers of any size should take to achieve their business goals.

Achieve greater yield, improve animal welfare and strengthen sustainability efforts with:

- Production Planning Analytics & Reporting
- Productions Management & Traceability
- Mobility & Data Automation



Precision Farming Pays for Itself

New and current users of MTech Systems' technologies can expect to:



Save Time



Increase Yield



Lower Feed Costs



Increase Flock Uniformity



Reduce Administrative Costs



Improve Bird Health and Welfare



Improve Traceability



Make Proactive Decisions



Enhance Flock Performance



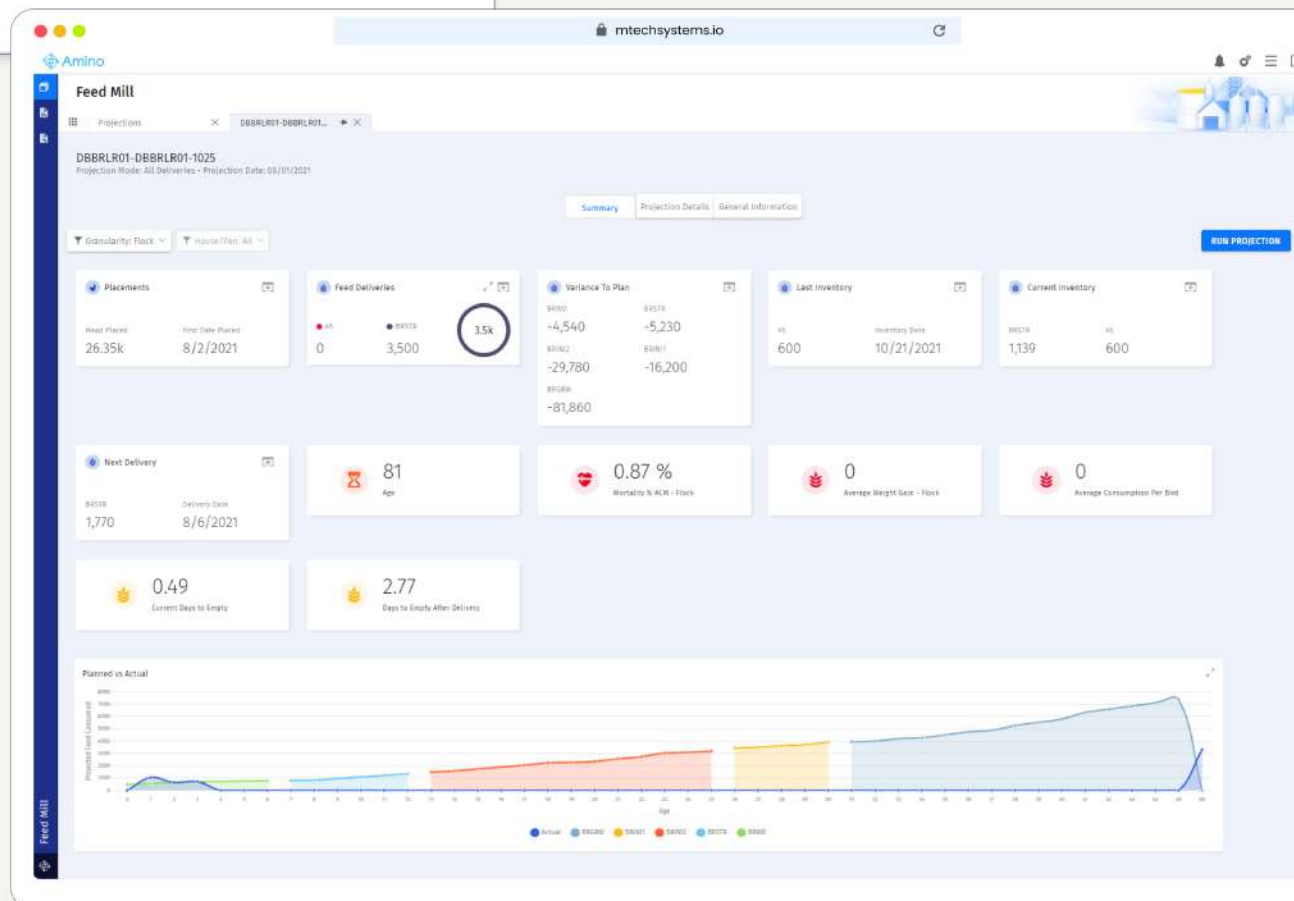
Remain Competitive and Adaptable



"MTech Systems' software has change the way we run our business using data. Their expertise and software is a valuable asset to our company."

Rod Harder

CFO at Granny's Poultry Cooperative Canada



There's a place for you in this Innovation Revolution!

Start your journey today and stay ahead of the competition

Hexa Reports that Investments in Precision Agriculture Will Reach \$43.4Billion USD by 2024

Let our experts show you how to get the most out of technology based on your business goals and budget.

[Chat with our Team](#)

